



VIEW LOOKING NORTHEAST

**Dancing Crab Properties, LLC**  
 1301 RIVER ROAD  
 POTOMAC, MD 20854

**STRUCTURA**  
 111 ROCKVILLE PIKE  
 SUITE 950  
 ROCKVILLE, MD 20850  
 301-987-9234

**CAPITOL ENGINEERING GROUP**  
 1825 K STREET NW  
 SUITE 375  
 WASHINGTON, DC 20006  
 202-216-0039

**Tenleytown Apartments**  
 4611 46th St NW  
 Washington, DC 20016

**REVISIONS**  
 1 Supplemental Prehearing Filing 9/07/18

DATE: 09/07/18  
 PROJECT NO: 2016-042  
 DRAWN BY: AG  
 CHECKED BY: JM/BB

**Bonstra Haresign**  
 ARCHITECTS

3D VIEW - FACING NORTHEAST

1728 Fourteenth Street, NW, Suite 300  
 Washington, DC 20009-4309

www.bonstra.com 202 588 9373 T

**A5.1**



ENTRY/OUTDOOR SEATING AREA: VIEW FROM SIDEWALK

CLIENT  
**Dancing Crab Properties, LLC**  
 1301 RIVER ROAD  
 POTOMAC, MD 20854

STRUCTURAL ENG  
**STRUCTURA**  
 111 ROCKVILLE PIKE  
 SUITE 950  
 ROCKVILLE, MD 20850  
 301-987-9234

MEP ENGINEER  
**CAPITOL ENGINEERING GROUP**  
 1825 K STREET NW  
 SUITE 375  
 WASHINGTON, DC 20006  
 202-216-0039

**Tenleytown Apartments**  
 4611 46th St, NW  
 Washington, DC 20016

REVISIONS  
 1 Supplemental Prehearing Filing 9/07/18


DATE: 09/07/18  
 PROJECT NO: 2016-042  
 DRAWN BY: AG  
 CHECKED BY: JM/GB

**Bonstra Haresign**  
 ARCHITECTS

3D VIEW - PUBLIC SPACE

1728 Fourteenth Street, NW, Suite 300  
 Washington, DC 20009-4309

www.bonstra.com 202 588 9373 T

**A5.2**



AERIAL VIEW

**Dancing Crab Properties, LLC**  
 1301 RIVER ROAD  
 POTOMAC, MD 20854

**STRUCTURA**  
 111 ROCKVILLE PIKE  
 SUITE 950  
 ROCKVILLE, MD 20850  
 301-987-9234

**CAPITOL ENGINEERING GROUP**  
 1825 K STREET NW  
 SUITE 375  
 WASHINGTON, DC 20006  
 202-216-0039

CLIENT  
 STRUCTURAL ENG  
 MEP ENGINEER

**Tenleytown Apartments**  
 4611 46<sup>th</sup> St NW  
 Washington, DC 20016

REVISIONS  
 1 Supplemental Prehearing Filing 9/07/18

DATE: 09/07/18  
 PROJECT NO: 2016-042  
 DRAWN BY: AG  
 CHECKED BY: JM/RB

**Bonstra Haresign**  
 ARCHITECTS

1728 Fourteenth Street, NW, Suite 300  
 Washington, DC 20009-4309

www.bonstra.com 202 588 9373 T

3D VIEW - ROOFTOP AERIAL

A5.3



ROOFTOP TERRACE: VIEW LOOKING NORTHEAST

CLIENT  
**Dancing Crab Properties, LLC**  
 1801 RIVER ROAD  
 POTOMAC, MD 20854

STRUCTURAL ENG.  
**STRUCTURA**  
 111 ROCKVILLE PIKE  
 SUITE 950  
 ROCKVILLE, MD 20850  
 301-987-9234

MEP ENGINEER  
**CAPITOL ENGINEERING GROUP**  
 1825 K STREET NW  
 SUITE 375  
 WASHINGTON, DC 20006  
 202-216-0039

**Tenleytown Apartments**  
 4811 46th St, NW  
 Washington, DC 20016

REVISIONS  
 1 Supplemental Prehearing Filing 9/07/18

DATE: 09/07/18  
 PROJECT NO: 2016-042  
 DRAWN BY: AG  
 CHECKED BY: JMB

**Bonstra Haresign**  
 ARCHITECTS

3D VIEW - ROOFTOP TERRACE

1728 Fourteenth Street, NW, Suite 300  
 Washington, DC 20009-4309

www.bonstra.com 202 588 9373 T

**A5.4**



STREET VIEW LOOKING NORTH

CLIENT  
**Dancing Crab Properties, LLC**  
 1801 RIVER ROAD  
 POTOMAC, MD 20854

STRUCTURAL ENG.  
**STRUCTURA**  
 111 ROCKVILLE PIKE  
 SUITE 950  
 ROCKVILLE, MD 20850  
 301-987-9234

MEP ENGINEER  
**CAPITOL ENGINEERING GROUP**  
 1825 K STREET NW  
 SUITE 375  
 WASHINGTON, DC 20006  
 202-216-0039

**Tenleytown Apartments**  
 4811 46<sup>th</sup> St, NW  
 Washington, DC 20016

REVISIONS

1	Supplemental Prehearing Filing	9/07/18

DATE: 09/07/18  
 PROJECT NO: 2016-042  
 DRAWN BY: AG  
 CHECKED BY: JMBB

**Bonstra Haresign**  
 ARCHITECTS

STREET VIEW LOOKING NORTH



STREET VIEW LOOKING SOUTH

CLIENT  
**Dancing Crab Properties, LLC**  
 1801 RIVER ROAD  
 POTOMAC, MD 20854

STRUCTURAL ENG.  
**STRUCTURA**  
 111 ROCKVILLE PIKE  
 SUITE 950  
 ROCKVILLE, MD 20850  
 301-987-9234

MEP ENGINEER  
**CAPITOL ENGINEERING GROUP**  
 1825 K STREET NW  
 SUITE 375  
 WASHINGTON, DC 20006  
 202-216-0039

**Tenleytown Apartments**  
 4811 46th St, NW  
 Washington, DC 20016

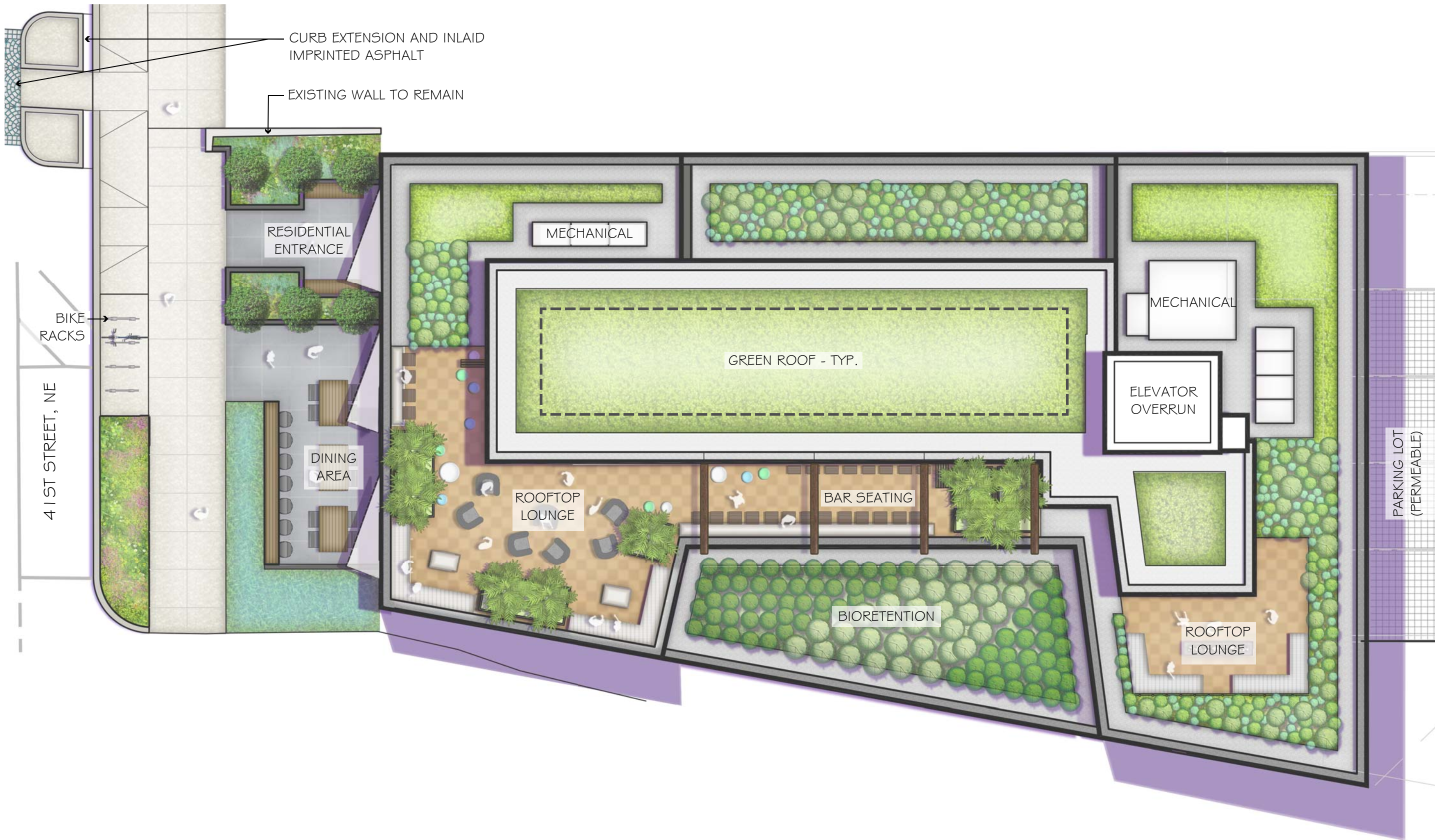
REVISIONS

1	Supplemental Prehearing Filing	9/07/18

DATE: 09/07/18  
 PROJECT NO: 2018-042  
 DRAWN BY: AG  
 CHECKED BY: JMBB

**Bonstra Haresign**  
 ARCHITECTS

STREET VIEW LOOKING SOUTH



41ST STREET, NE

BIKE RACKS

CURB EXTENSION AND INLAID IMPRINTED ASPHALT

EXISTING WALL TO REMAIN

RESIDENTIAL ENTRANCE

DINING AREA

MECHANICAL

GREEN ROOF - TYP.

ROOFTOP LOUNGE

BAR SEATING

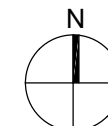
BIORETENTION

ELEVATOR OVERRUN

MECHANICAL

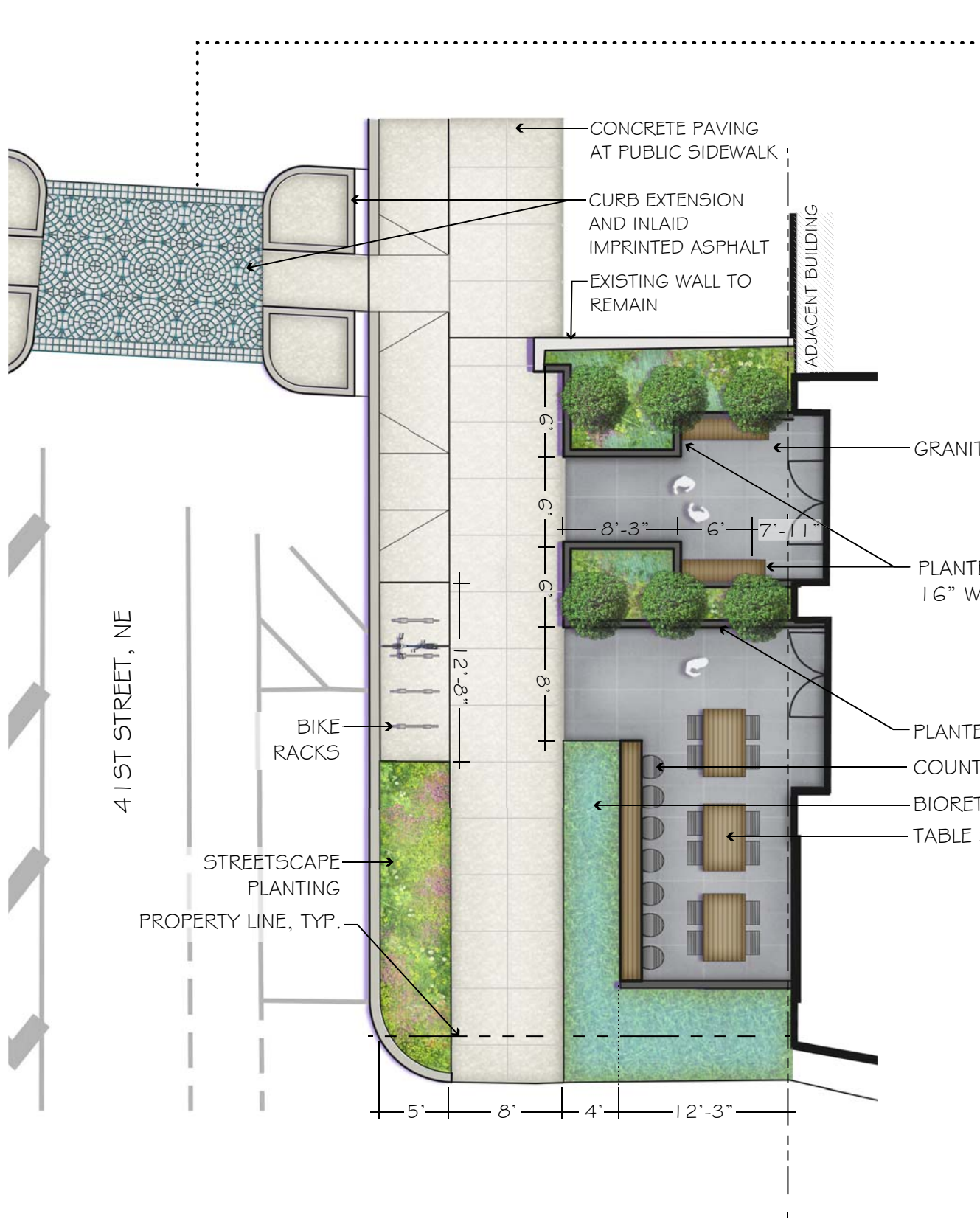
PARKING LOT (PERMEABLE)

ROOFTOP LOUNGE



**Bonstra Haresign**  
ARCHITECTS

LANDSCAPE SITE PLAN



INLAID IMPRINTED ASPHALT



BLACK GRANITE PAVING



STRIP LIGHTING



PLANTER WITH BENCH SEATING FASTENED TO TOP OF CURB WALL



TABLE & CHAIRS

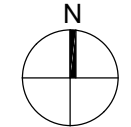


BIORETENTION PLANTING



STONE CURB

NOTE: ALL FEATURES IN PUBLIC SPACE ARE SUBJECT TO DDOT AND PUBLIC SPACE COMMITTEE APPROVAL



**Bonstra Haresign**  
ARCHITECTS

PUBLIC SPACE PLAN

**DANCING CRAB PROPERTIES, LLC**  
1801 RIVER ROAD  
POTOMAC, MD 20854

**STRUCTURA**  
111 ROCKVILLE PIKE  
SUITE 950  
ROCKVILLE, MD 20850  
301-987-9234

**CAPITOL ENGINEERING GROUP**  
1825 K STREET NW  
SUITE 375  
WASHINGTON, DC 20006  
202-216-0039

**BRADLEY SITE DESIGN**  
1010 WISCONSIN AVE NW  
SUITE 208  
WASHINGTON, DC 20007  
202-695-8066

**TENLEYTOWN APARTMENTS**  
4611 4616 1ST STREET, NW  
WASHINGTON, DC 20016